

Demolition Hammer - 0 611 223 741 - GBH 10 DC

www.powertools-aftersaleservice.com



BOSCH

Item	Part Number	Description	Illustration	Price	Quantity	Price Group
	1 3 615 102 507	Motor Housing		1 £20,20	1	34
	2 1 617 220 074	Un. Flange-Mtd. Motor		1 £267,00	1	57
	4 1 617 200 048	On-Off Switch		1 £10,70	1	29
	4/10 2 910 011 088	Socket head cap screw		1 £0,45	1	10
	5 1 604 460 201	Power supply cord		1 £20,20	1	34
	6 1 610 703 053	Grommet		1 £1,00	1	12
	6 3 600 703 011	Grommet		1 £1,20	1	13
	7 1 601 302 018	Fastening Clamp		1 £0,70	1	11
	9 1 611 110 695	Manufacturer's Nameplate		1 £1,75	1	15
	13 2 610 909 310	Deep-Groove Ball Bearing		1 £7,40	1	26
	14 1 610 910 089	Needle-Roller Bearing		1 £12,50	1	30
	15 1 616 610 078	Fan		1 £8,20	1	27
	20 1 618 597 068	Toolholder		1 £61,20	1	45
	21 1 610 508 023	Protective Cap		1 £2,45	1	17
	22 1 610 591 014	Protection Sleeve		1 £2,45	1	17
	23 1 610 520 001	Stop Sleeve		1 £6,00	1	24
	24 1 610 590 006	Spacer Tube		1 £4,05	1	21
	25 1 612 300 027	Stopping Device		1 £4,75	2	22
	26 1 610 290 025	Indexing Disk		1 £3,05	1	19
	28 1 614 621 000	Compression Spring		1 £1,20	1	13
	31 1 610 290 030	Damping Ring		1 £1,20	1	13
	35 1 615 806 113	Hammer Pipe		1 £67,00	1	46
	38 1 615 190 056	Covering hood		1 £10,70	1	29
	39 1 615 190 057	Covering hood		1 £10,70	1	29
	41 1 613 124 046	Striker Pin		1 £10,70	1	29
	43 1 615 808 083	Bearing cover		1 £18,20	1	33
	45 1 610 290 032	Intermediate Ring		1 £1,75	1	15
	47 1 611 329 016	Notched Plate		1 £5,35	1	23
	48 1 616 334 011	Gear Sleeve		1 £15,70	1	32
	51 1 616 333 031	Crown Gear		1 £53,40	1	44
	53 1 610 190 026	Stop Disc		1 £2,65	1	18
	54 1 610 190 024	Control Disc		1 £10,70	1	29
	56 1 618 700 066	Hammer Piston		1 £10,70	1	29

Item	Part Number	Description	Illustration	Price	Quantity	Price Group
57	1 618 710 066	Striker	1	£9,50	1	28
70	1 612 001 034	Connecting Rod	1	£13,80	1	31
71	1 613 100 020	Straight Pin	1	£1,20	1	13
73	1 615 500 291	Housing Cover	1	£5,35	1	23
74	1 612 386 004	Retaining Bracket	1	£7,40	1	26
75	1 615 132 055	Handle	1	£20,20	1	34
76	1 612 026 057	Clamp Handle	1	£4,75	1	22
81	1 612 026 056	Switch-Pawl	1	£7,40	1	26
82	1 615 510 000	Light Conductor	1	£1,00	1	12
84	1 612 025 060	Auxiliary Handle	2	£3,45	1	20
85	1 618 040 059	Support Clamp	2	£4,05	1	21
97	1 610 102 032	Supporting Disc	1	£1,75	1	15
99	1 610 114 020	Supporting Disc	1	£2,45	2	17
102	1 610 102 036	Shim	1	£1,20	2	13
103	1 610 290 034	Thrust Ring	1	£4,75	1	22
111	3 610 501 500	Bushing	1	£10,70	1	29
112	3 613 461 500	Threaded Ring	1	£6,00	1	24
113	1 613 435 009	Tapping Screw	1	£0,70	2	11
114	1 900 210 130	O-Ring	1	£1,75	1	15
115	1 610 508 027	Protective Cap	1	£1,30	1	14
116	1 610 913 004	Needle-Roller Assembly	1	£2,00	1	16
117	1 610 913 011	Needle-Roller Assembly	1	£3,05	1	19
119	1 610 910 081	Needle-Roller Bearing	1	£7,40	1	26
120	1 610 290 037	Inner Ring	1	£8,20	1	27
121	1 610 290 035	Bearing Ring	1	£8,20	1	27
124	1 610 190 029	Thrust Bearing Disc	1	£7,40	1	26
125	2 910 611 047	Tapping Screw	1	£0,70	4	11
126	2 910 211 019	Tapping Screw	1	£0,45	1	10
129	1 610 910 085	Needle-Roller Bearing	1	£7,40	1	26
131	1 611 110 696	Manufacturer's Nameplate	1	£1,75	1	15
137	1 610 591 015	Plug	1	£1,75	1	15
138	1 611 015 043	Sealing Frame	1	£2,45	1	17
139	1 610 290 036	Sealing disk	1	£1,75	1	15
141	1 610 290 028	Rotary shaft lip seal	1	£1,30	1	14
142	3 613 344 500	Oil Return Ring	1	£12,50	1	30
143	1 614 601 021	Retaining ring	1	£1,75	1	15
144	1 610 190 028	Supporting Disc	1	£2,00	2	16
153	2 916 660 007	Spring retaining ring	1	£0,45	1	10
154	2 916 660 040	Spring retaining ring	1	£0,70	1	11
155	1 614 601 020	Retaining ring	1	£0,70	3	11
156	2 916 650 003	Spring retaining ring	1	£0,45	1	10
160	1 610 210 132	O-Ring	1	£1,30	1	14
161	1 610 290 031	Damping Ring	1	£1,20	1	13
162	1 610 210 133	O-Ring	1	£2,45	2	17
163	1 610 210 134	O-Ring	1	£1,30	2	14
164	1 900 210 117	O-Ring	1	£1,75	1	15
165	1 610 210 096	O-Ring	1	£1,30	3	14
166	1 610 210 084	O-Ring	1	£0,70	1	11
167	1 610 283 026	Rotary shaft lip seal	1	£2,00	1	16
170	2 914 551 117	Microencapsulated Screw	1	£0,70	1	11
171	2 910 141 158	Hex Socket Head Cap Screw	1	£0,45	8	10
172	1 613 414 021	Microencapsulated Screw	1	£0,45	4	10
173	1 613 433 001	Screw and washer assembly	1	£0,45	4	10

Item	Part Number	Description	Illustration	Price	Quantity	Price Group
174	2 910 211 247	Tapping Screw	1	£0,45	6	10
661	1 615 430 010	Grease Tube	2	£2,65	1	18
750	2 605 438 322	Carrying Case	2	-,-	1	-
784	2 602 025 086	Auxiliary Handle	2	-,-	1	-
792	1 613 001 003	Depth-Gauge	2	-,-	1	-
801	1 617 220 075	Un. Flange-Mtd. Motor	1	£267,00	1	57
803	1 617 220 074	Un. Flange-Mtd. Motor	1	£267,00	1	57
808	1 601 106 032	Nameplate	1	£1,20	1	13
837	1 617 000 294	Control Bushing	1	£13,80	1	31
840	1 617 000 992	Impact Mechanism Housing	1	£142,00	1	52
842	1 614 336 016	Brush Holder	1	£44,70	1	42
842/030	1 604 652 015	Spiral Spring	1	£0,70	2	11
842/050	1 617 014 126	Carbon-Brush Set	1	£7,40	1	26
842/080	2 910 611 012	Tapping Screw	1	£0,45	2	10
846	1 617 000 241	Cylindrical Roller	1	£2,65	1	18
849	1 617 000 991	Control Fork	1	£9,50	1	28
860	1 617 000 993	Spur Wheel Clutch	1	£78,50	1	47
872	1 617 000 994	Eccentric Cog Wheel	1	£61,20	1	45
880	1 617 233 027	Speed governor	1	£33,80	1	39
887	1 617 000 807	Clamping Band	2	£8,20	1	27
897	1 617 000 224	Wear and Tear Part Set	1	£46,90	1	43
898	1 617 000 225	Wear and Tear Part Set	1	£53,40	1	44

Illustration - Type E

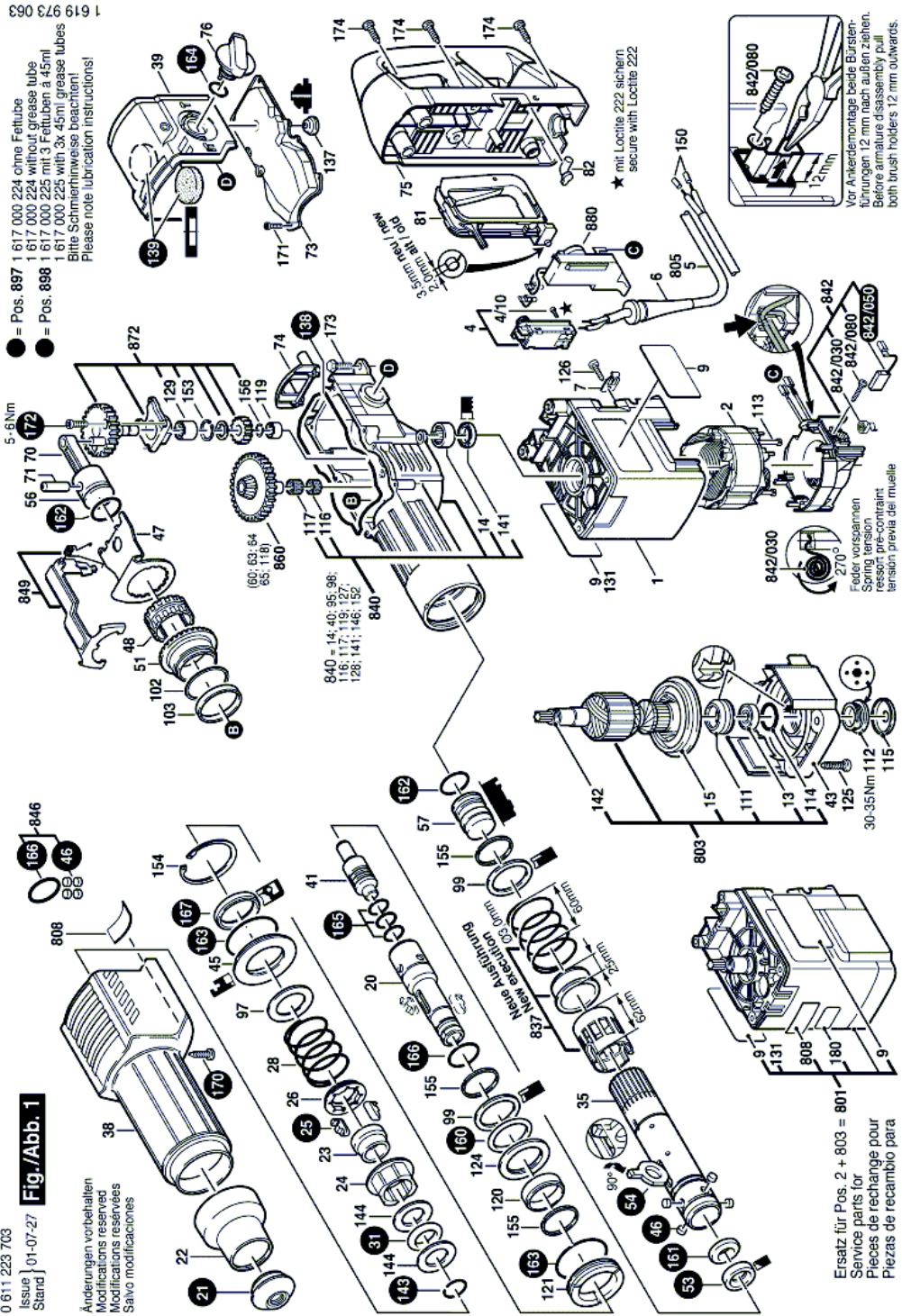
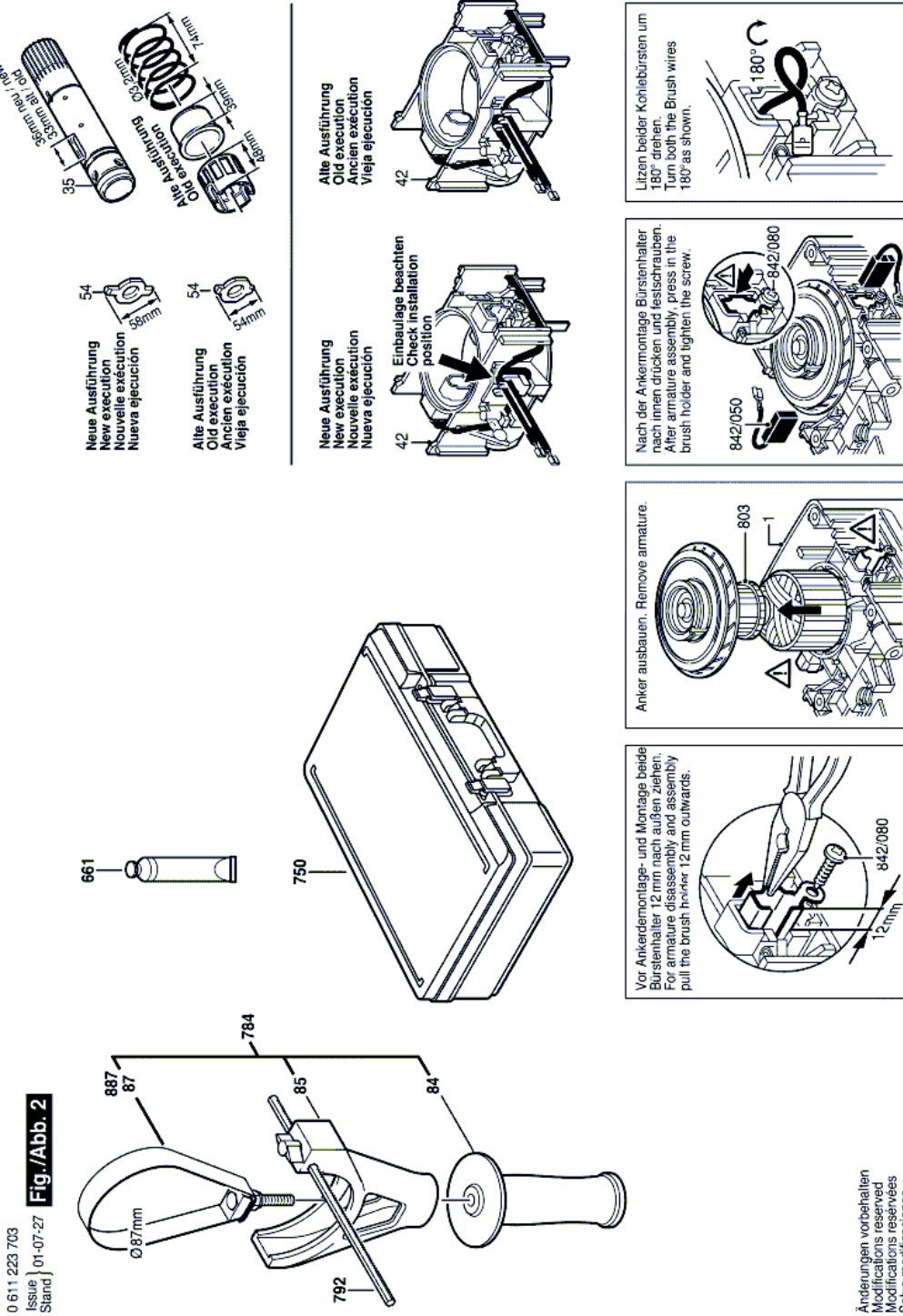


Illustration - Type E



Information subject to change without further notice.